



**SHADEY-SIDE  
READINGS AT THE  
SYDNEY FRINGE  
TUESDAY  
SEPTEMBER  
27, 7PM  
THE SOUND LOUNGE  
SEYMOUR CENTRE**

# **POET TREE**

**PLANTED WAY TOO CLOSE TO THE HOUSE\***

\$18 students and concession \$24 full  
**BOOKINGS** 02 9351 7940 **ONLINE** [www.seymourcentre.com](http://www.seymourcentre.com)

\*WARNING: At no time did the poet, nor indeed did the poet, Council approval, for these poems.



**Cathy Bray says 'WELCOME to POET TREE'**























# REPUBLICS OF LETTERS: LITERARY COMMUNITIES IN AUSTRALIA

A symposium hosted by Australian Literature at  
the University of Sydney

13-14 January 2011  
St Andrews College, The University



## Plenary speakers:

- Joan Shelley Rubin, University of Rochester, NY State  
author of *Songs of Ourselves: The Uses of Poetry in  
America* (2007), *The Making of Middlebrow Culture*  
(1992)
- Philip Mead, University of Western Australia  
author of *Networked Language: Culture and  
History in Australian Poetry* (2008)

For more information visit:

[www.conferences.arts.usyd.edu.au/index.php?cf=32](http://www.conferences.arts.usyd.edu.au/index.php?cf=32)

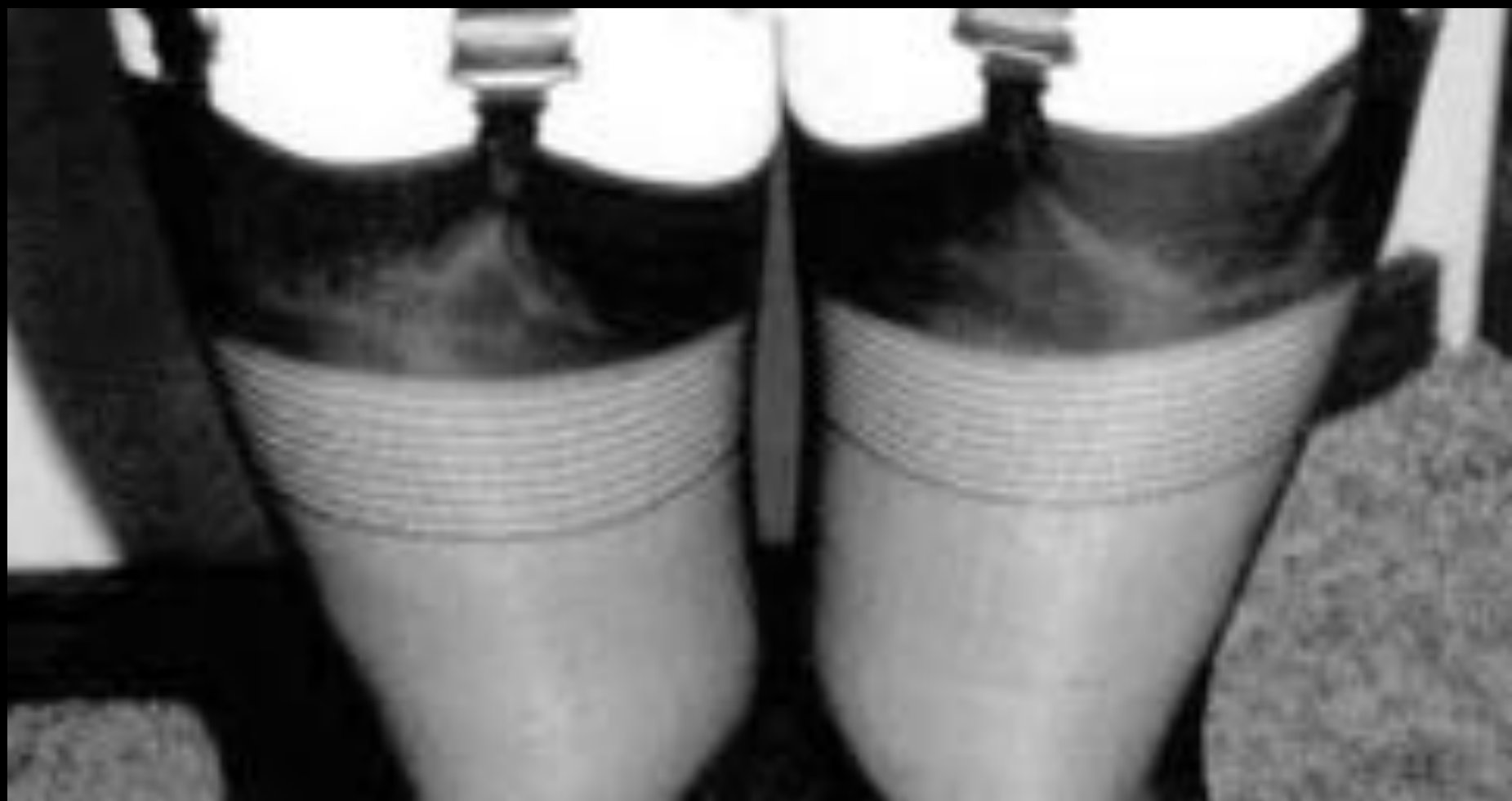
Please direct inquiries to the convenors:

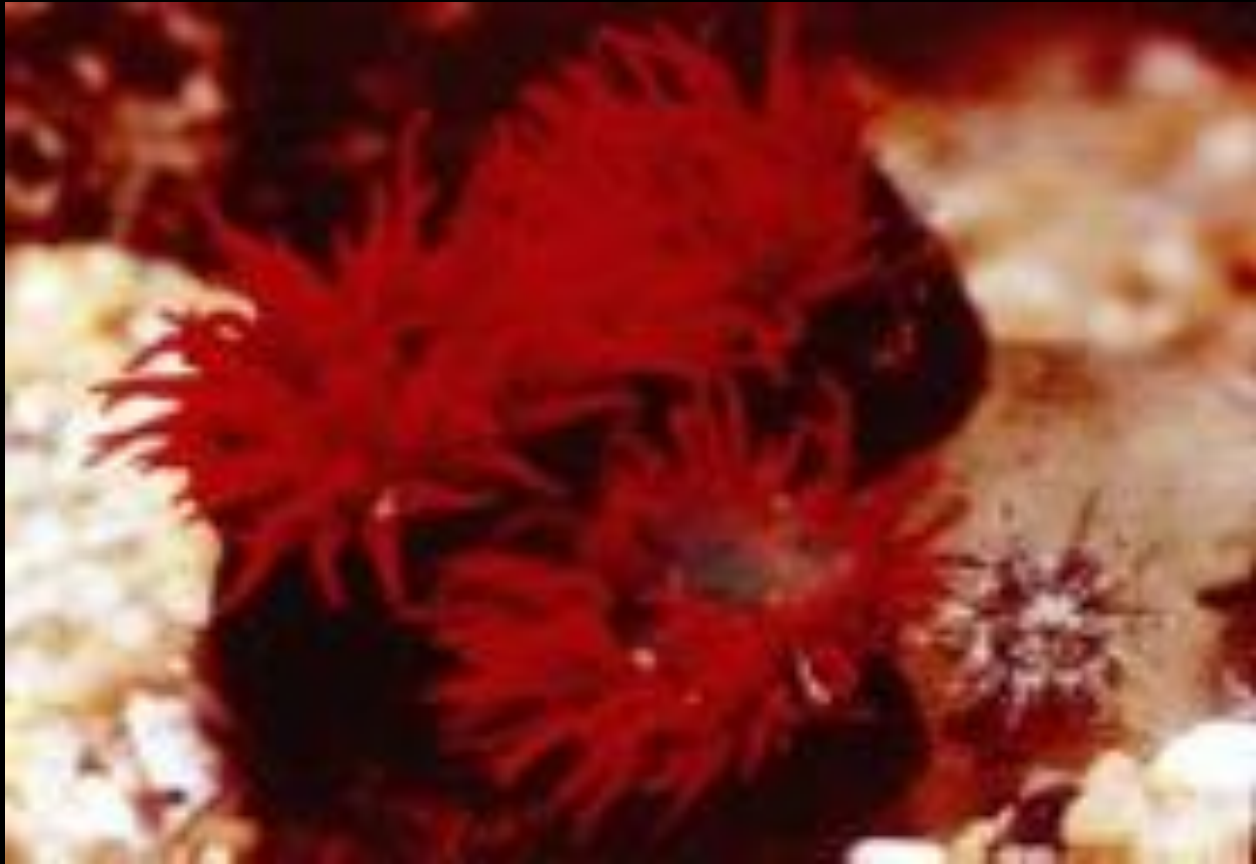
- Peter Kirkpatrick  
[peter.kirkpatrick@sydney.edu.au](mailto:peter.kirkpatrick@sydney.edu.au)
- Robert Dixon  
[robert.dixon@sydney.edu.au](mailto:robert.dixon@sydney.edu.au)













PENGUIN CLASSICS

JOHN DONNE  
THE COMPLETE  
ENGLISH POEMS











Stephen  
Fry



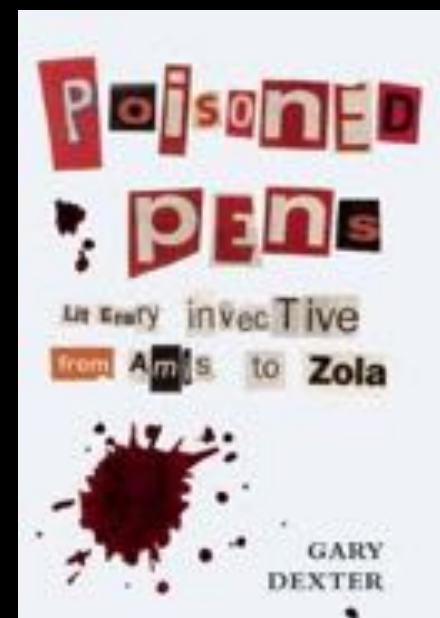
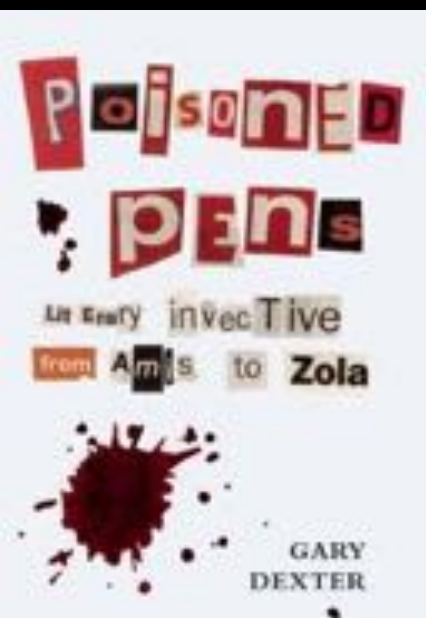
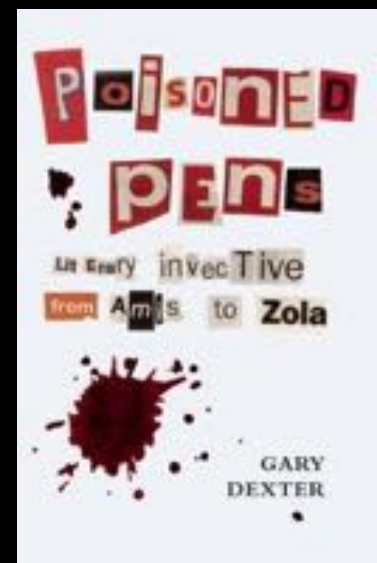
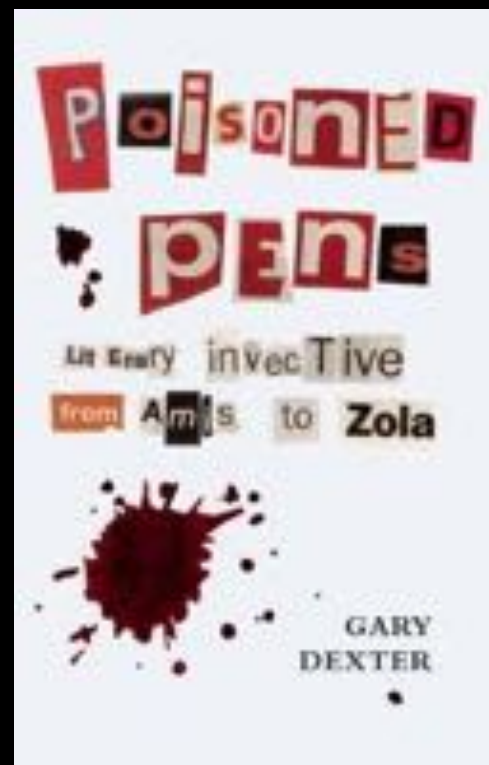
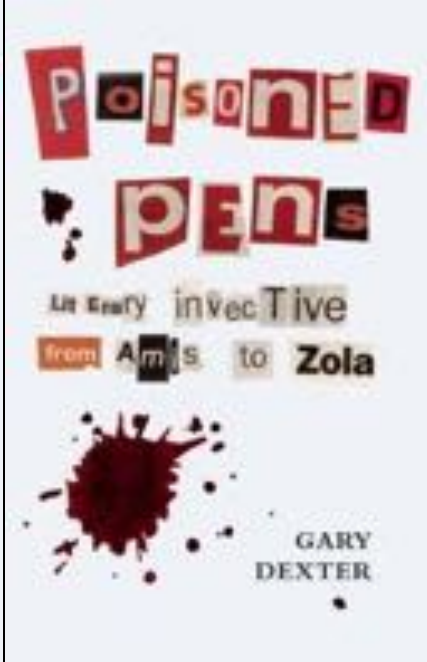
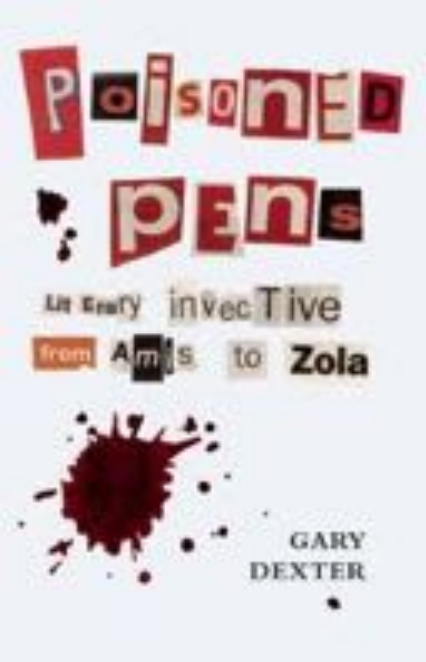
The Ode Less  
Travelled

UNLOCKING THE POET WITHIN











Judith Beveridge

*New Poems* - Storm and Honey





THE UNIVERSITY OF  
**SYDNEY**

UNIVERSITY  
LIBRARY

FRIENDS  
THE LIBRARY

CELEBRATING  
SUPPORT

**“Loveable singly or unmarshalled  
they are merciless in a gang”**

**lines from *‘Eucalypts in Exile’* by Les Murray**  
(published in *‘Taller When Prone’* by Les Murray – Black Inc. 2010)



“The Colleges lifted their heads. It did seem  
You disturbed something just perfected  
That they were holding carefully all of a piece,  
Till the glue dried.....

Nobody wanted your dance,  
Nobody wanted your strange glitter – your floundering  
Drowning life and your effort to save yourself,  
Treading water, dancing the dark turmoil,  
Looking for something to give –”

Lines from *'God Help The Wolf After Whom the Dogs Do Not Bark'* by Ted Hughes

published in *'Birthday Letters'* by Ted Hughes - Faber & Faber. 1999











MEW 1755-97  
1755  
1-30

MEW 1755-97  
1755  
1-30

MEW 1770-97  
1770  
1-30

MEW 1769-97  
1769  
1-35

**PoetsUnion**

Kenneth Slessor

“You find this ugly,  
I find it lovely”





















**The POET TREE has so many people to thank ....**



**THE POET TREE: Cathy Bray**

**Trees / Script: : Cathy Bray**

**Poster design : Johanna Steinmann (Spoonful ) from an original drawing by Edith Moss**

**The POET TREE wishes to give special thanks to**

**Julianne Wargren and Johanna Steinmann**

**A-Z of thank yous...**

**Advertising enlightenment: David Barnes (*currency ideas*)**

**Badde Manors Writers' Group (script development): Adrienne Jerram , Alicia Gilmore,  
Julianne Wargren, Luci Temple and Ralph Bergman .**

**Dramaturge: Jenni Nixon**

**Family support: Geoff, Alicia, Edie and Henry Moss**

**Lighting and Sound: Carlos, Seymour Centre**

**Poet Tree CHAIR : kindly supplied by STEM gifts, Balmain.**

**Publicity : Leone Smallwood, 9 libraries of the City of Sydney**

**Script advisor : Henry B Moss, WAAPA**

**Show feedback: Alistair Cowie, Rose P and Neil Watkinson**

**Technical director : Julianne Wargren**

**Stage Manager: Jimmy Stewart, Seymour Centre**

**+**

**Staff of The Seymour Centre: Dale Menz, Carola Dillon, Michael East**

**Staff of The Sydney Fringe : Jessica Wallace , Meryl Rogers,**



**Cathy Bray says thank you for coming to POET TREE**





**SHADEY-SIDE  
READINGS AT THE  
SYDNEY FRINGE  
TUESDAY  
SEPTEMBER  
27, 7PM  
THE SOUND LOUNGE  
SEYMOUR CENTRE**

# **POET TREE**

**PLANTED WAY TOO CLOSE TO THE HOUSE\***

\$18 students and concession \$24 full  
**BOOKINGS** 02 9351 7940 **ONLINE** [www.seymourcentre.com](http://www.seymourcentre.com)

\*WARNING: At no time did she seek, nor indeed did she get, Council approval, for these poems.













































INVITATION

Hi, Cobby!  
Rupert





































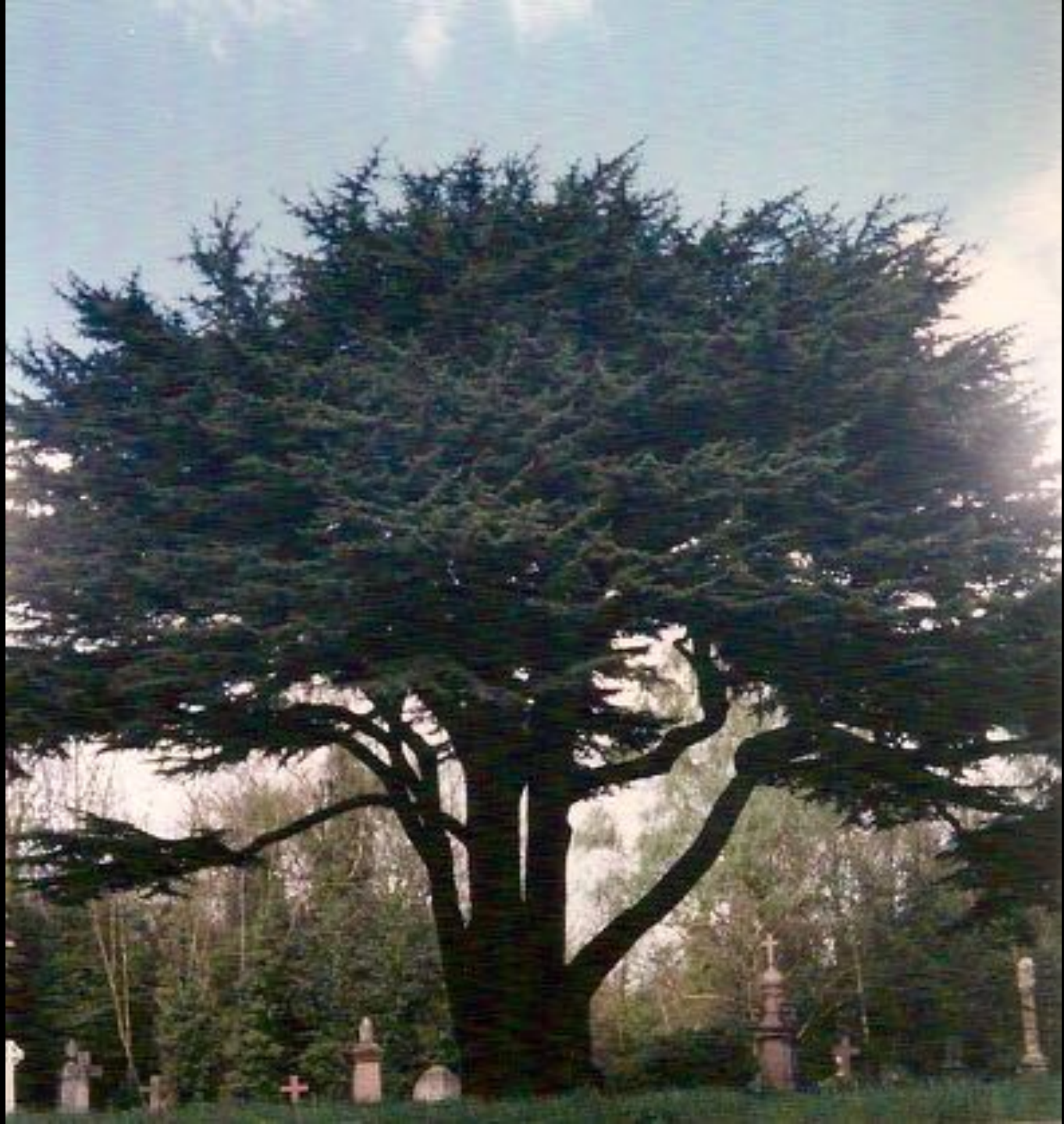


**SHADEY-SIDE  
READINGS AT THE  
SYDNEY FRINGE**

**TUESDAY  
SEPTEMBER  
27, 7PM**

**THE SOUND LOUNGE  
SEYMOUR CENTRE**





















NO LITER OR CYCLES  
ALLOWED IN THE WOOD

No Litter or Dumping

Wood Opens at 7.30am  
Closes at 9.45 pm \*

HIGHGATE WOOD



CORPORATION  
OF LONDON

HIGHGATE WOOD

GYPSY GATE

Dedicated to the Public in 1884 and Since



CORPORATION  
OF LONDON

HIGHGATE WOOD

GYPSY GATE

Dedicated to the Public in 1864 and Since  
Maintained by the Corporation of London





# REPUBLICS OF LETTERS: LITERARY COMMUNITIES IN AUSTRALIA

A symposium hosted by Australian Literature at  
the University of Sydney

13-14 January 2011

St Andrews College, The University

## Plenary speakers:

- Joan Shelley Rubin, University of Rochester, NY State  
author of *Songs of Ourselves: The Uses of Poetry in  
America* (2007), *The Making of Middlebrow Culture*  
(1992)
- Philip Mead, University of Western Australia  
author of *Networked Language: Culture and  
History in Australian Poetry* (2008)

For more information visit:

[www.conferences.arts.usyd.edu.au/index.php?id=12](http://www.conferences.arts.usyd.edu.au/index.php?id=12)

Please direct inquiries to the convenors:

- Peter Kirkpatrick  
[peter.kirkpatrick@sydney.nyu.au](mailto:peter.kirkpatrick@sydney.nyu.au)
- Robert Dixon  
[robert.dixon@sydney.edu.au](mailto:robert.dixon@sydney.edu.au)





# REPUBLICS OF LETTERS: LITERARY COMMUNITIES IN AUSTRALIA

A symposium hosted by Australian Literature at  
the University of Sydney

13-14 January 2011  
St Andrews College, The University

## Plenary speakers:

- Joan Shelley Rubin, University of Rochester, NY State  
author of *Songs of Ourselves: The Uses of Poetry in  
America* (2007), *The Making of Middlebrow Culture*  
(1992)
- Philip Mead, University of Western Australia  
author of *Networked Language: Culture and  
History in Australian Poetry* (2008)

For more information visit:

[www.conferences.arts.usyd.edu.au/index.php?cf=32](http://www.conferences.arts.usyd.edu.au/index.php?cf=32)

Please direct inquiries to the convenors:

- Peter Kirkpatrick  
[peter.kirkpatrick@sydney.edu.au](mailto:peter.kirkpatrick@sydney.edu.au)
- Robert Dixon  
[robert.dixon@sydney.edu.au](mailto:robert.dixon@sydney.edu.au)





Stephen  
Fry



The Ode Less  
Travelled

UNLOCKING THE POET WITHIN



As an actor and writer Stephen Fry has bestridden the world for a quarter of a century, sowing discord, agitation and dismay. His power grows daily and his disciples are many. However, it is written that at the Time of Leavening, a Chosen One will arise to destroy him. Until that time, Mr Fry will continue to direct, broadcast, act and write in North London and Norfolk, where his best friends are the flowers.

HUTCHINSON  
Random House,  
20 Vauxhall Bridge Road,  
London SW1V 2SA  
Cover illustration:  
Bill Sanderson  
ISBN: 0 09 179661 X  
[www.randomhouse.co.uk](http://www.randomhouse.co.uk)

Stephen  
Fry



The Ode Less  
Travelled



Stephen  
Fry



The Ode Less  
Travelled

UNLOCKING THE POET WITHIN



